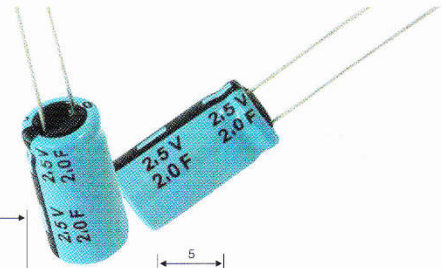
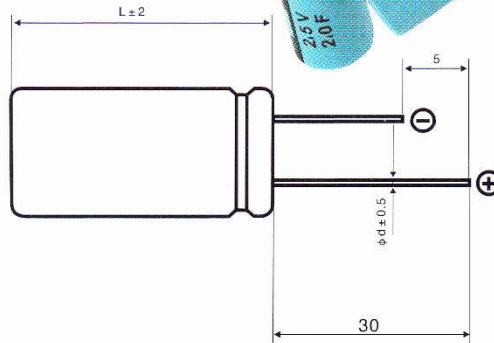
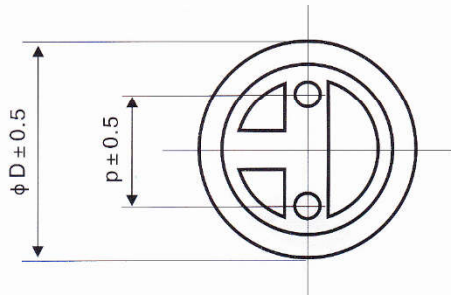


SP J

FEATURES

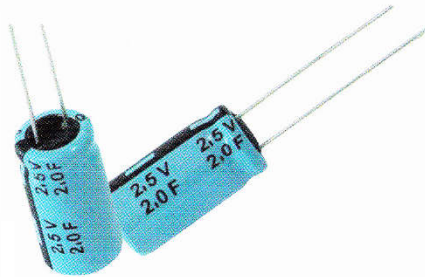
- Radial & Snap-in type
- Large capacity, VENT case



SPECIFICATIONS

Operating temperature	-25~+70°C
Rate voltage	2.5V
Surge Voltage	3.0V
Max Capacitance tolerance	-20%~80%
Temperature Characteristics	+70°C $\Delta C/C$ $\leq 30\%$, ESR $\leq 100\%$ of the specified value at 25°C -25°C $\Delta C/C$ $\leq 50\%$, ESR $\leq 400\%$ of the specified value at 25°C
High temperature load	After 1000h, +70°C ± 2 , nominal voltage, $\Delta C/C$ $\leq 30\%$ of the initial measured value, ESR $\leq 400\%$ of the initial specified value
High temperature without load	After 1000h, +70°C ± 2 , nominal voltage, $\Delta C/C$ $\leq 30\%$ of the initial measured value, ESR $\leq 400\%$ of the initial specified value
Humidity Resistance	After +40°C ± 2 , 90~95%RH, 240h, $\Delta C/C$ $\leq 30\%$ of the initial measured value, IL $\leq 200\%$ of the initial specified value, ESR ≤ 4 time of the initial specified value

Part Number	Rated Capacitance	Operating Voltage	ESR 1kHz (mΩ)	Size (Φd×L, mm) ±0.5mm	P(mm) ±0.5mm	Φd (mm) ±0.05mm
SP-2R5-J704VY	0.7F	2.5V	600	8×13	3.5	0.6
SP-2R5-J105VY	1.0F	2.5V	300	8×13	3.5	0.6
SP-2R5-J205VY	2.0F	2.5V	150	10×20	4.5	0.6
SP-2R5-J305VY	3.0F	2.5V	90	8×20	3.5	0.6
SP-2R5-J335VY	3.3F	2.5V	70	10×20	4.5	0.6
SP-2R5-J475VY	4.7F	2.5V	60	13×21	4.5	0.6
SP-2R5-J805UY	8.0F	2.5V	50	13×21	4.5	0.6
SP-2R5-J106VY	10F	2.5V	40	13×32	5.5	0.8
SP-2R5-J206VY	20F	2.5V	25	16×32	7.5	0.8
SP-2R5-J306VY	30F	2.5V	25	16×32	7.5	0.8
SP-2R5-J506VY	50F	2.5V	20	18×32	7.5	0.8
SP-2R5-J906VY	90F	2.5V	15	22×54	10	1.5
SP-2R5-J127VY	120F	2.5V	12	25×54	10	1.5



Characteristic curve

